



**DRIVE
CLEAN**
Pennsylvania

INSPECTIONS NEWSLETTER

Important Vehicle Inspection Information

Pennsylvania's Vehicle Inspection Program

WINTER 2025 ISSUE

PAGE 1

Station Owners & Inspectors

Resource Guides

Drive Clean Deskmat Reference
Guide

Emissions Inspection Program Poster

PAGE 2

New Inspection Stickers Are Now
Available

Ordering Inspection Stickers

Safety Inspector Recertification

Reporting Lost, Damaged, Or Stolen
Inspection Certificates

PAGE 3

Helpful e-SAFETY Reports

What Vehicles Still Require A Semi-
Annual Inspection?

Enhanced Safety Inspection:
Emissions Equipment

If you have inspection questions or topics you'd like to be covered in future issues, please let us know. We welcome your suggestions.

**Contact the Inspection
Operator Hotline at
888-265-5909.**



Pennsylvania
Department of Transportation

WINTER 2025 ISSUE

INSPECTIONS NEWSLETTER

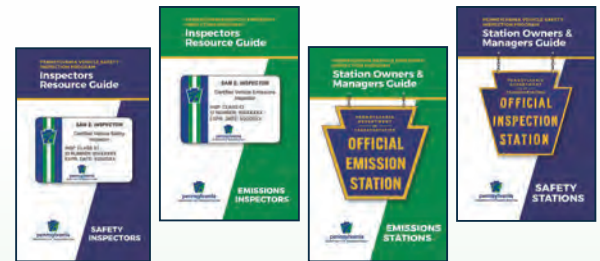


Pennsylvania
Department of Transportation



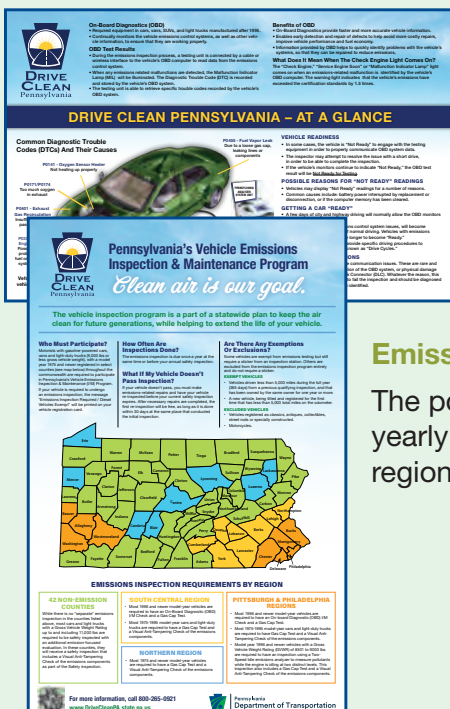
Station Owners & Inspectors Resource Guides

PennDOT recently published a series of resource guides for station owners and inspectors. The four resource guides include station owners guides for emissions stations and safety stations, along with guides for emissions and safety inspectors. The resource guides have been mailed out to all stations and inspectors. If you did not receive a resource guide, ask your QAO to provide you with a copy.



Drive Clean Pennsylvania - At A Glance

Every inspection station was recently mailed a Pennsylvania Drive Clean deskmat reference guide and a Pennsylvania Emissions Inspection program poster. These consumer materials will provide vehicle owners with information about emissions inspections and help answer their questions.



Drive Clean Deskmat Reference Guide

The deskmat is a two-sided reference tool that will help customers understand the benefits of the Pennsylvania Drive Clean program and answer common questions about the OBD inspection process. The deskmat was designed to be displayed at the service counter or in a customer waiting area. The heavy-duty lamination will protect against spills and dirt.

Emissions Inspection Program Poster

The poster provides vehicle owners with information about who must participate, yearly requirements and a map of the emissions inspection requirements by region. Inspection stations can hang the poster in their customer waiting area.

Both the deskmat and poster are also available for download at www.padrivecleanportal.com in the Materials For Customers section



New Inspection Stickers Are Now Available

The 2026-2027 inspection stickers are now available for purchase. Any stickers purchased on or after October 1, 2025, will be new campaign stickers. The 2025-2026 stickers may be used for inspections on vehicles with expiry dates up to December 2025.

The 2026-2027 stickers (AI, IM and AO stickers) must be used starting November 1, 2025 for vehicles with a January 2026 expiry. For semi-annual inspections (SI stickers) either sticker series can be used for inspections performed through June 30, 2026.



Once an inspection station begins to use the new 2026-2027 stickers, a separate MV-431 or MV-480 must be started.



ORDERING INSPECTION STICKERS

If ordering online, the fee is calculated automatically. Online orders allow for easy access to track the progress of your order. To order online use the link or QR code to the left.

www.inspections.penndot.pa.gov

Please allow fourteen business days for delivery of your inspection stickers before calling to check on the status of your order. We understand that timely fulfillment of your order is of the utmost importance.

SAFETY INSPECTOR RECERTIFICATION

It Never Hurts To Brush Up Before The Test!

When you take your Safety Inspector Recertification test, you will be asked questions about the safety program and the vehicle categories for which you have a license.

Before clicking that Take Exam button on the PATrainingPortal.com website, be sure to look through all the resources under Training Materials for Student tab. There you will find articles, examples, and practice quizzes to refresh your memory. These resources are available to you as part of your recertification fee.



Reporting Lost, Damaged, Or Stolen Inspection Certificates

Official inspection stations are required to immediately report any lost, damaged, or stolen certificates of inspection. However, it is not necessary to stop performing inspections.

The Vehicle Inspection Division (VID) interprets the regulation regarding inspection certificates - 67 Pa. Code § 175.29(e)(1) - to mean that stations must immediately notify the Department by informing the Inspection Sticker Unit whenever an inspection sticker is lost, damaged or stolen. Reporting should not be delayed until the time of the station audit.

To report lost, damaged, or stolen stickers, please contact the Inspection Sticker Unit at 717-705-2182. Stations must also notify their assigned Quality Assurance Officer. Notification to local law enforcement is not required under the current regulations.

HELPFUL e-SAFETY REPORTS



Did You Know?

The e-Safety program features reports that can help you keep track of your inspections. Clicking the **Help** tab will bring up a handy e-safety user guide any time you need it.

Under the **Reports** tab you will find the following:

- **Safety Inspection** – allows you to view and reprint the report on any inspection your station performed
- **Sticker Replacement** – allows you to view and reprint the report on any replacement stickers your station performed
- **Sticker Usage** – shows a list of all inspections in a chosen date range, organized by sticker number
- **Station Statistics** – after you enter a desired date range, this option creates a custom report that shows a variety of data about the inspections performed at your station, including percentages of passing and failing vehicles and other types of stickers entered (replacements, damage/void, stolen, and missing)
- **Vehicle History** – shows the previous safety inspection history for a vehicle by entering the VIN

Log in to the e-SAFETY portal to see the reports. <https://www.penndotesafety.pa.gov/PAeSafety/security/login> or scan the QR code to the right.



What Vehicles Still Require A Semi-Annual Inspection?

Semi-annual vehicle inspections are still required for:

School Buses - vehicles which are under contract with or owned by a school district or a private or parochial school, including vehicles having chartered group and party rights under the Public Utility Commission and used to transport school students.

Passenger Vans – vehicles used to transport persons for hire or owned by a commercial enterprise and used for the transportation of employees to or from their place of employment.

Mass Transit – vehicles, other than farm vehicles for which a biennial certificate of exemption has been issued, are still required to be inspected semi-annually.



ORIGINAL MANUFACTURER'S SPECIFICATIONS

Enhanced Safety Inspection: Emissions Equipment

If you are inspecting a reconstructed, flood, theft recovered, and/or modified vehicle, you must be able to verify all the emissions equipment that was originally on the vehicle at the time of manufacture, and verify that all components are present, appear to be properly connected, and appear to be the correct type for the vehicle.

Sometimes the Vehicle Emissions Control Information (VECI) label under the hood (if it is still

present) will detail all the components that are part of the emissions system. But most often you will have to consult a shop repair information system or printed manuals on older vehicles to know for sure.

Remember, only Collectible, Specially Constructed, and Street Rods are exempt from this requirement.